



GRANDE REAL
VILLA ITÁLIA
 HOTEL & SPA
 ★ ★ ★ ★ ★
 CASCAIS

SALAS
ROOMS

↑ ↓
 ← →
 (CxLxA) | (LxWxH)
DIMENSÕES
 DIMENSIONS



M²



PLATEIA
 THEATRE



ESCOLA
 SCHOOL



EM U
 U SHAPE



BANQUETE
 BANQUET

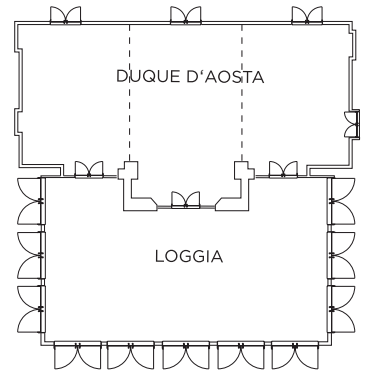
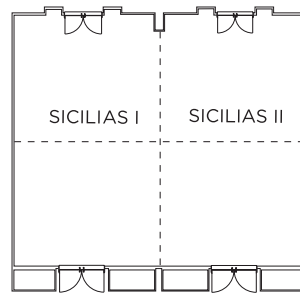
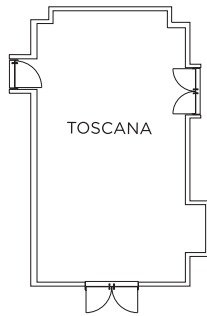
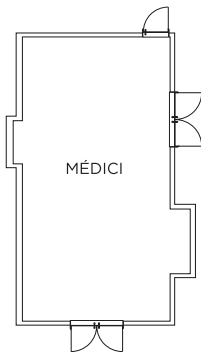


CABARET
 CABARET



MESA ÚNICA
 SINGLE TABLE

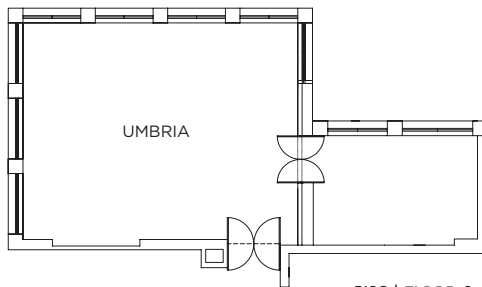
	(CxLxA) (LxWxH)	M ²	PLATEIA THEATRE	ESCOLA SCHOOL	EM U U SHAPE	BANQUETE BANQUET	CABARET CABARET	MESA ÚNICA SINGLE TABLE
Príncipe de Saboia	26,20x14,20x3,70	370	160	118	50	150	84	-
Príncipe de Saboia I	10,80x14,20x3,70	153	76	54	21	60	24	20
Príncipe de Saboia II	10,80x14,20x3,70	153	76	54	21	60	24	20
Duque D'Aosta	16,20x6,50x3,15	113	44	27	22	45	24	24
Duque D'Aosta I	5,40x6,50x3,15	35	13	12	8	-	6	9
Duque D'Aosta II	5,10x8,10x3,15	41	19	15	8	-	6	12
Duque D'Aosta III	5,40x6,50x3,15	35	13	12	8	-	6	9
Duque D'Aosta A (I & II)	10,60x6,50x3,15	68	24	18	11	25	15	12
Loggia	12,70x6x3,15	85	29	24	15	30	12	17
Médici	8,30x4,50x3,10	37	-	-	-	-	-	9
Toscana	7,40x4,30x3,10	32	-	-	-	-	-	9
Piemonte	6,30x3,60x3,10	22	-	-	-	-	-	-
Sicilias	8,90x10,60x2,40	94	34	30	18	30	18	14
Sicilias I	8,90x5,20x2,40	46	16	12	9	12	6	11
Sicilias II	8,90x5,20x2,40	46	16	12	9	12	6	11
Navegantes	26,10x12,80x3,00	-	-	-	-	90	-	-
Umbria	9,35x7,20x3,80	-	34	27	17	32	18	10



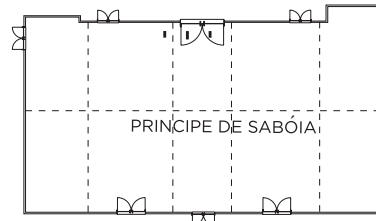
PISO | FLOOR 0

PISO | FLOOR 0

PISO | FLOOR 0



PISO | FLOOR 0



PISO | FLOOR -1

SALAS DE REUNIÃO
 MEETING ROOMS