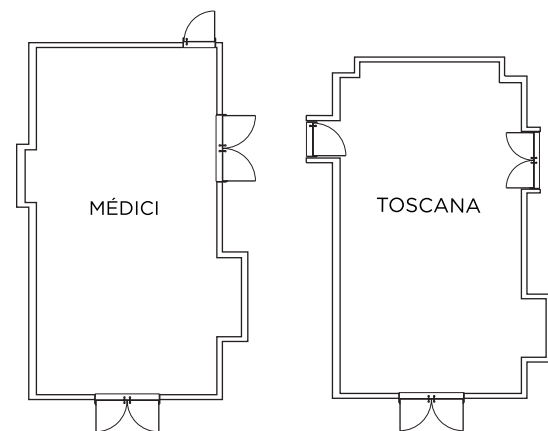
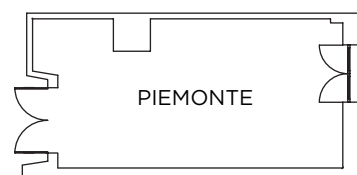


SALAS DE REUNIÃO

MEETING ROOMS

- _ 19 salas multifuncionais
- _ Capacidade máxima da maior sala - 400 pax/plateia
- _ Luz natural em todas as salas, com vista mar ou jardim
- _ Aluguer de material audiovisual de última geração, incluindo sistema de audioconferência de alta voz
- _ Ligação de internet wireless e banda larga
- _ Garagem com 50 lugares

- _ *19 multifunctional meeting rooms*
- _ *Maximum capacity of largest room - 400 pax/theatre*
- _ *Natural light in all rooms with sea or garden view*
- _ *Rental of state-of-the-art audiovisual material, including speaker phone audioconferencing system*
- _ *Wireless internet connection and broadband*
- _ *Garage with 50 spaces*

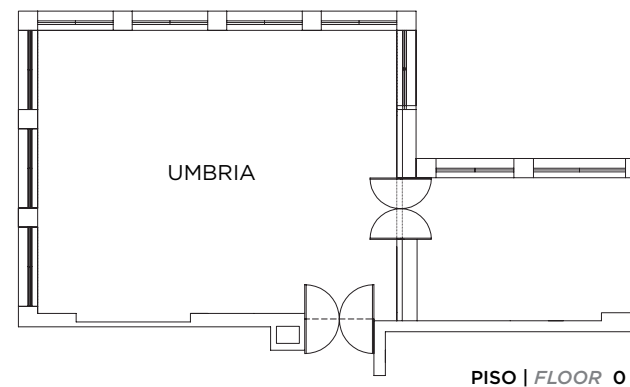


PISO | FLOOR 0

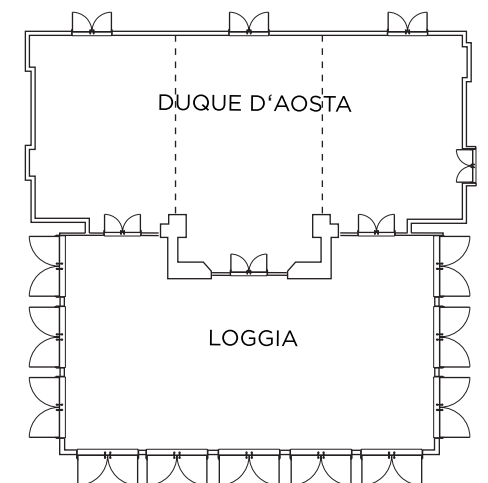
SALAS ROOMS

| | (CxLxA) (LxWxH) DIMENSÕES DIMENSIONS | M ² | PLATEIA THEATRE | ESCOLA SCHOOL | EM U U SHAPE | RECEPÇÃO RECEPTION | BANQUETE BANQUET | CABARET CABARET | BUFFET BUFFET | MESA ÚNICA SINGLE TABLE |
|--|--|----------------|--------------------|------------------|-----------------|-----------------------|---------------------|--------------------|------------------|----------------------------|
|--|--|----------------|--------------------|------------------|-----------------|-----------------------|---------------------|--------------------|------------------|----------------------------|

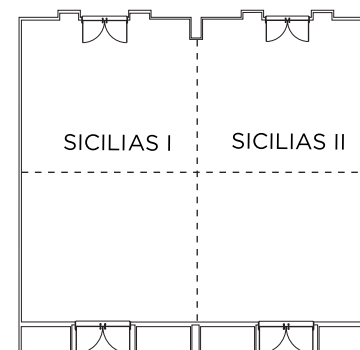
| | | | | | | | | | | |
|--------------------------|------------------|-----|-----|-----|-----|-----|-----|-----|-----|----|
| Príncipe de Saboia | 26,20x14,20x3,70 | 370 | 400 | 235 | 100 | 365 | 300 | 168 | 250 | - |
| Príncipe de Saboia I | 10,80x14,20x3,70 | 153 | 190 | 108 | 42 | 150 | 120 | 48 | 90 | 40 |
| Príncipe de Saboia II | 10,80x14,20x3,70 | 153 | 190 | 108 | 42 | 150 | 120 | 48 | 90 | 40 |
| Duque D'Aosta | 16,20x6,50x3,15 | 113 | 110 | 54 | 43 | 110 | 90 | 48 | 70 | 48 |
| Duque D'Aosta I | 5,40x6,50x3,15 | 35 | 32 | 24 | 15 | 30 | - | 12 | - | 18 |
| Duque D'Aosta II | 5,10x8,10x3,15 | 41 | 48 | 30 | 15 | 35 | - | 12 | - | 24 |
| Duque D'Aosta III | 5,40x6,50x3,15 | 35 | 32 | 24 | 15 | 30 | - | 12 | - | 18 |
| Duque D'Aosta A (I & II) | 10,60x6,50x3,15 | 68 | 60 | 36 | 21 | 60 | 50 | 30 | 40 | 24 |
| Loggia | 12,70x6x3,15 | 85 | 72 | 48 | 30 | 80 | 60 | 24 | 40 | 34 |
| Médici | 8,30x4,50x3,10 | 37 | - | - | - | - | - | - | - | 18 |
| Toscana | 7,40x4,30x3,10 | 32 | - | - | - | - | - | - | - | 16 |
| Piemonte | 6,30x3,60x3,10 | 22 | - | - | - | - | - | - | - | 4 |
| Sicilias | 8,90x10,60x2,40 | 94 | 85 | 60 | 36 | 85 | 60 | 36 | 50 | 28 |
| Sicilias I | 8,90x5,20x2,40 | 46 | 40 | 24 | 18 | 40 | 24 | 12 | 24 | 22 |
| Sicilias II | 8,90x5,20x2,40 | 46 | 40 | 24 | 18 | 40 | 24 | 12 | 24 | 22 |
| Belvedere | 16,20x7,20x2,90 | - | - | - | - | - | 70 | - | - | - |
| Navegantes | 26,10x12,80x3,00 | - | - | - | - | - | 180 | - | - | - |
| Umbria | 9,35x7,20x3,80 | - | 84 | 54 | 33 | 80 | 64 | 36 | 60 | 20 |



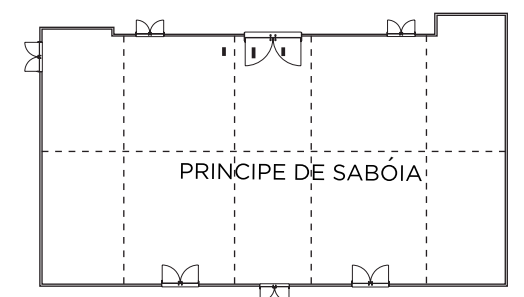
PISO | FLOOR 0



PISO | FLOOR 0



PISO | FLOOR 0



PISO | FLOOR -1